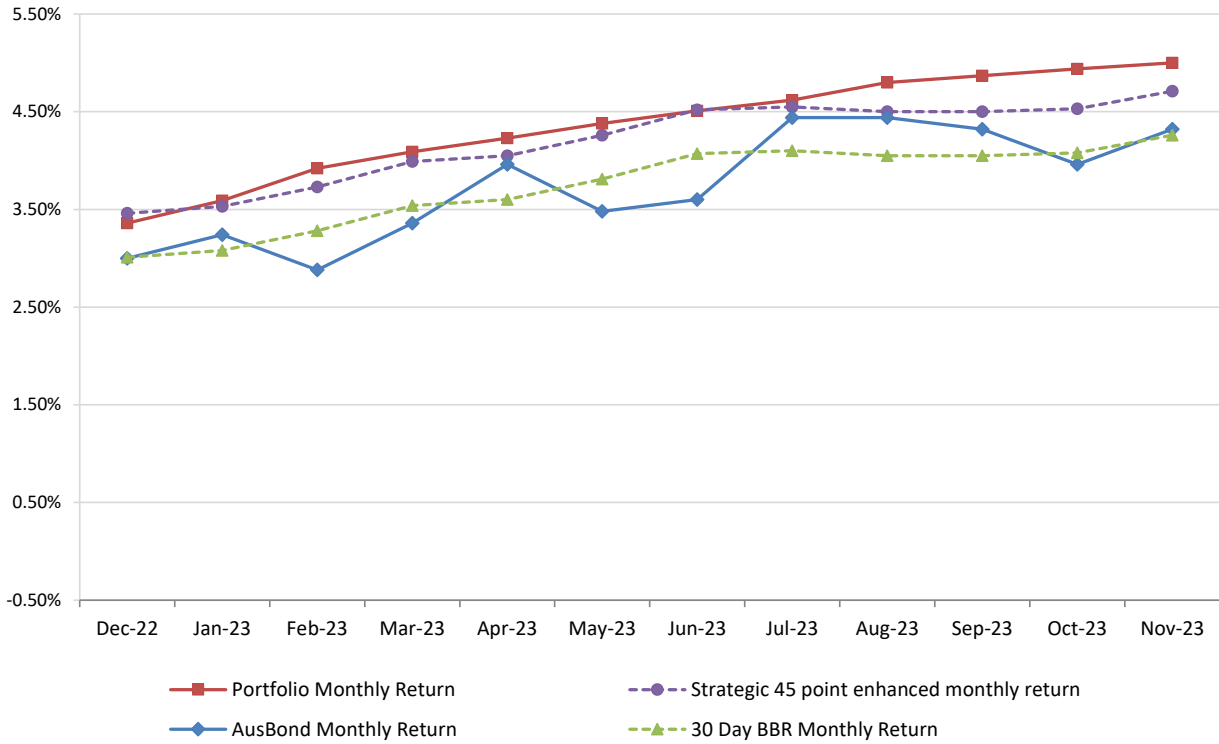


Attachment B

**Investment Performance
as at 30 November 2023**

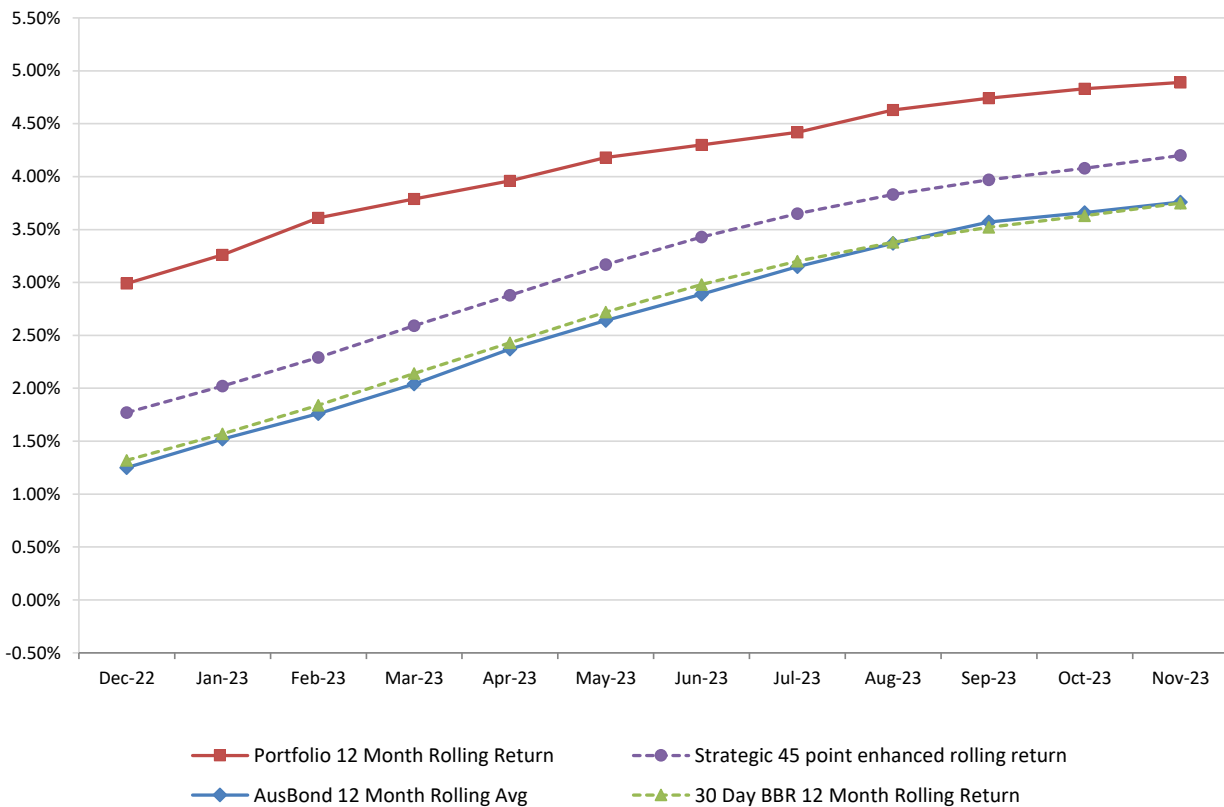
Monthly Results

Actual Portfolio vs Strategic Enhanced Benchmark vs AusBond Benchmark vs 30 Day BBR Benchmark
November 2023

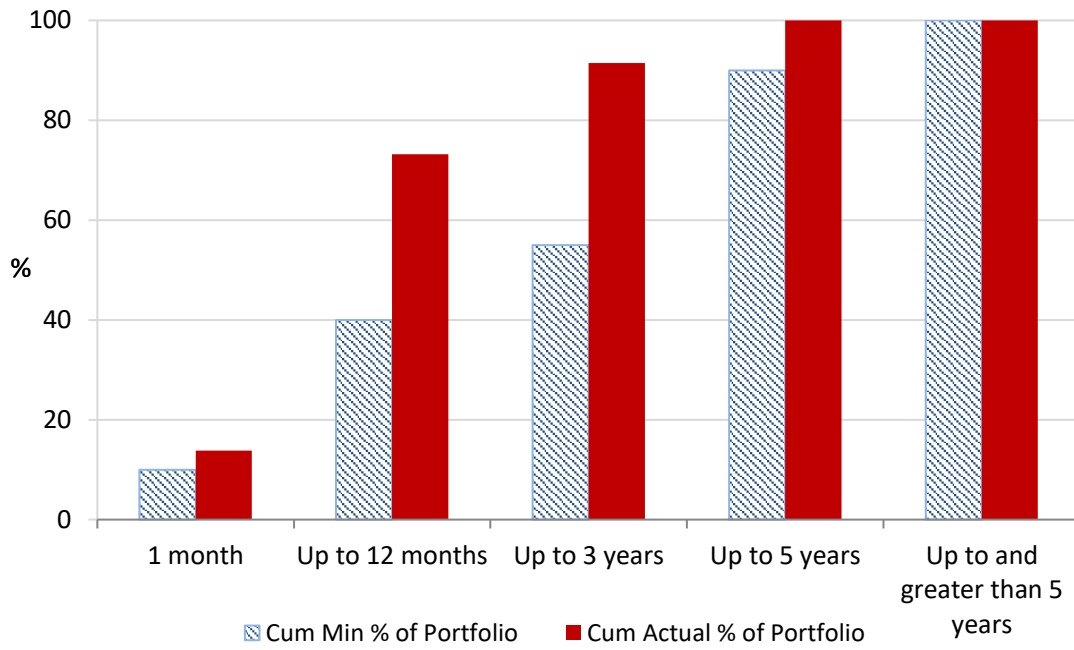


12 Month Rolling Averages

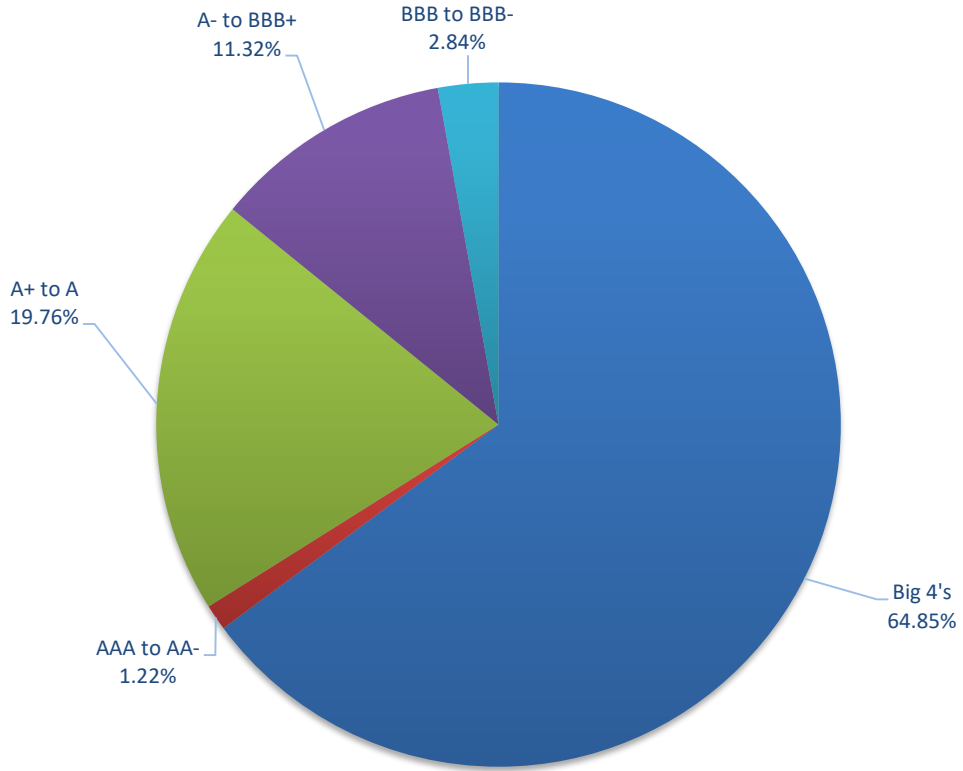
Actual Portfolio vs Strategic Enhanced Benchmark vs AusBond Benchmark vs 30 Day BBR Benchmark
November 2023



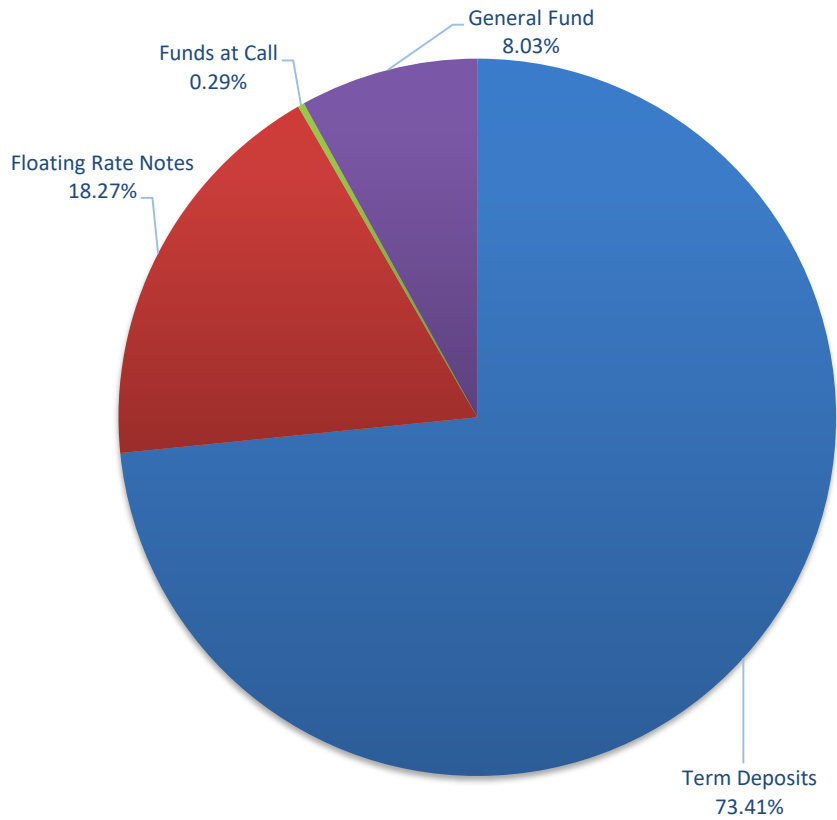
Portfolio Liquidity - Minimum Allocations as at 30 November 2023



Risk Profile as at 30 November 2023



Risk Profile as at 30 November 2023



INVESTMENT AND CASH DISTRIBUTION BY FINANCIAL INSTITUTION				
as at 30 November 2023				
Institution Category	Financial Institution	Amount \$M	Financial Inst. %	Institution Cat. %
Australian Big 4 Bank (and related institutions)	ANZ Bank	24.5	3.0	
	Commonwealth Bank	193.6	23.7	
	National Australia Bank	79.4	9.7	
	Westpac Banking Corporation	232.5	28.4	
Big 4 Total		530.1		64.9
Other Australian ADIs and Australian subsidiaries of foreign institutions	Bank Australia Limited	9.5	1.2	
	Bank of Queensland	23.0	2.8	
	Bendigo & Adelaide Bank	69.5	8.5	
	Great Southern Bank (formerly Credit Union Australia)	6.5	0.8	
	ING Bank	75.0	9.2	
	Suncorp Bank	72.5	8.9	
	Macquarie Bank Ltd	14.0	1.7	
	Northern Territory Treasury Corporation	10.0	1.2	
Newcastle Permanent Building Society	7.3	0.9		
Other ADI Total		287.3		35.1
Grand Total		817.3	100.0	100.0